

BASHER BOARDS

Pedal Filter – Bare Bones

Thank you for purchasing your new pedal filter from basherboards.com!

This filter was hand built and tested thoroughly before being shipped. If you are not completely satisfied with its performance, you can return it undamaged at no charge for a full refund.

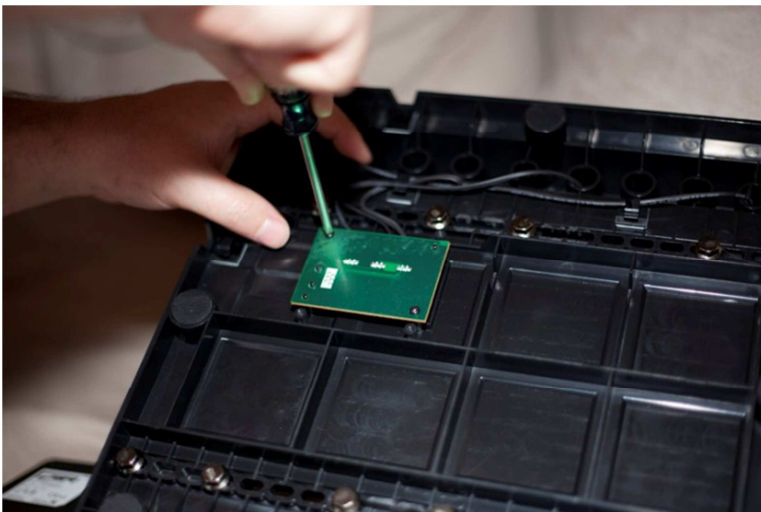
Comments or Questions - email support@basherboards.com

Installing Your New Pedal Filter

1. Turn off your wheel.
2. On the bottom of the pedals, unplug the cable connecting the pedals to the wheel.
3. Unscrew the 4 screws holding the small cover and place them somewhere safe.



4. Unscrew the 2 screws holding the circuit board down and place them somewhere safe.



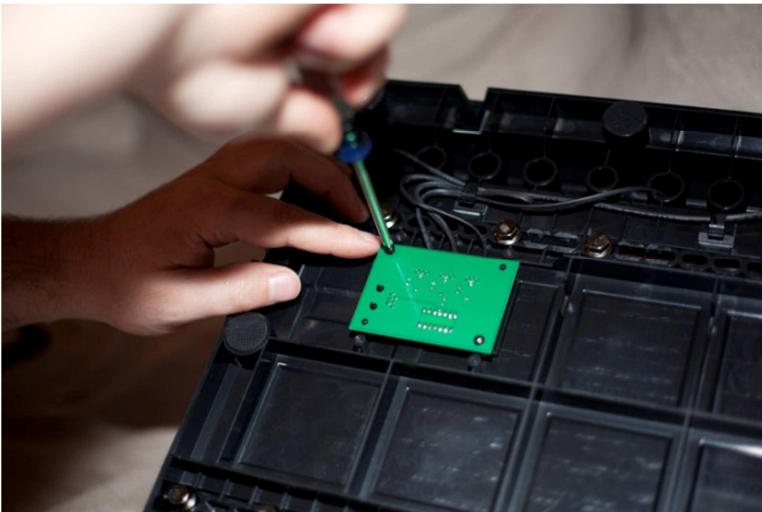
5. Pay close attention to which wire is which, ideally you should label the wires temporarily with some tape. After doing this, carefully remove each wire. Try to pull on the connector itself if you can and not the wires. **SAVE THE BOARD SOMEWHERE SAFE.** If you need to return your pedals, you will want to put this board back in first.



6. Carefully plug each of the wires into their labeled location on the new board. Be sure they are all the way into the sockets.



7. Attach the new board using two of the screws you took out earlier. Do not overtighten.



8. Reattach the cover to the back of the pedals using the remaining screws. Do not overtighten.



9. Plug your pedals back into the wheel, turn the wheel on and have fun!
- If you have any issues, please either use the contact form at www.basherboards.com or email support@basherboards.com. I will do my very best to help. **Please note: If you must return your pedals to the manufacturer for any reason, be sure to remove your board and put the original back in. I will not replace your board if you leave it installed mistakenly.**